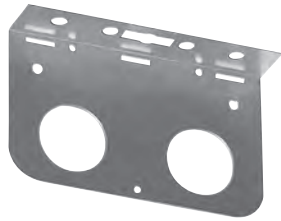


SUPPLY



521-558



521-557

DRAINAGE

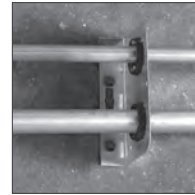
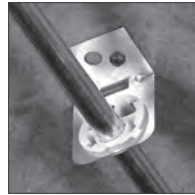


521-559

Pipe Eye Suspension Bracket™

Galvanized Steel

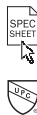
- Supports copper, PEX or CPVC tubing
- Includes one, two or four 1¹¹/₃₂" holes
- Use with Pipe Eye™ insulators
- Suspend bracket with 3/8" all-thread rod
- Multiple nail holes and slots for installation flexibility
- Can be mounted to a concrete pan before the pour



SUPPORT

Related Products
Pipe Eye™

p 427



Item No.	Description	Gauge	Pkg	Min Qty	Case Qty
521-557	Single hole	21	B	25	25
521-558	Double hole	21	B	25	25
521-559	Quadruple hole	21	B	25	25

APPENDIX

Pipe Eye™

» See page 427

- Fits 1¹¹/₃₂" holes in metal studs or brackets
- Split Design. Offset hole for adjustable tube position
- Reduces expansion/contraction noise in hot water lines
- Flame retardant models meet UL94 V-2 flame rating
- Plenum Safe™ models meet ASTM E84 25/50 Flame/Smoke Spread and UL94 V-0 flame rating



CONSIDER SIOUX CHIEF AS YOUR

**ROUGH
PLUMBING
ARMORY**

TOGETHER, WE WILL TAKE THE FIELD.

» SUPPORT > SUPPLY HANGERS > Pipe Eye